

AURAFEEL™ RANGE

# FROM CELL TO SURFACE

- > Advanced injectable solutions
- > Designed for consistency
- > Predictable clinical results



AURAFEEL™ RANGE

## Injectables Designed for Consistency.

Contact us at:  
+1 604 544 5958

1641 Welch Street,  
North Vancouver, BC, V7P 3G9  
Canada

[csnpharma.com](http://csnpharma.com)  
[theaurafamily.com](http://theaurafamily.com)



AURA  
AESTHETICS

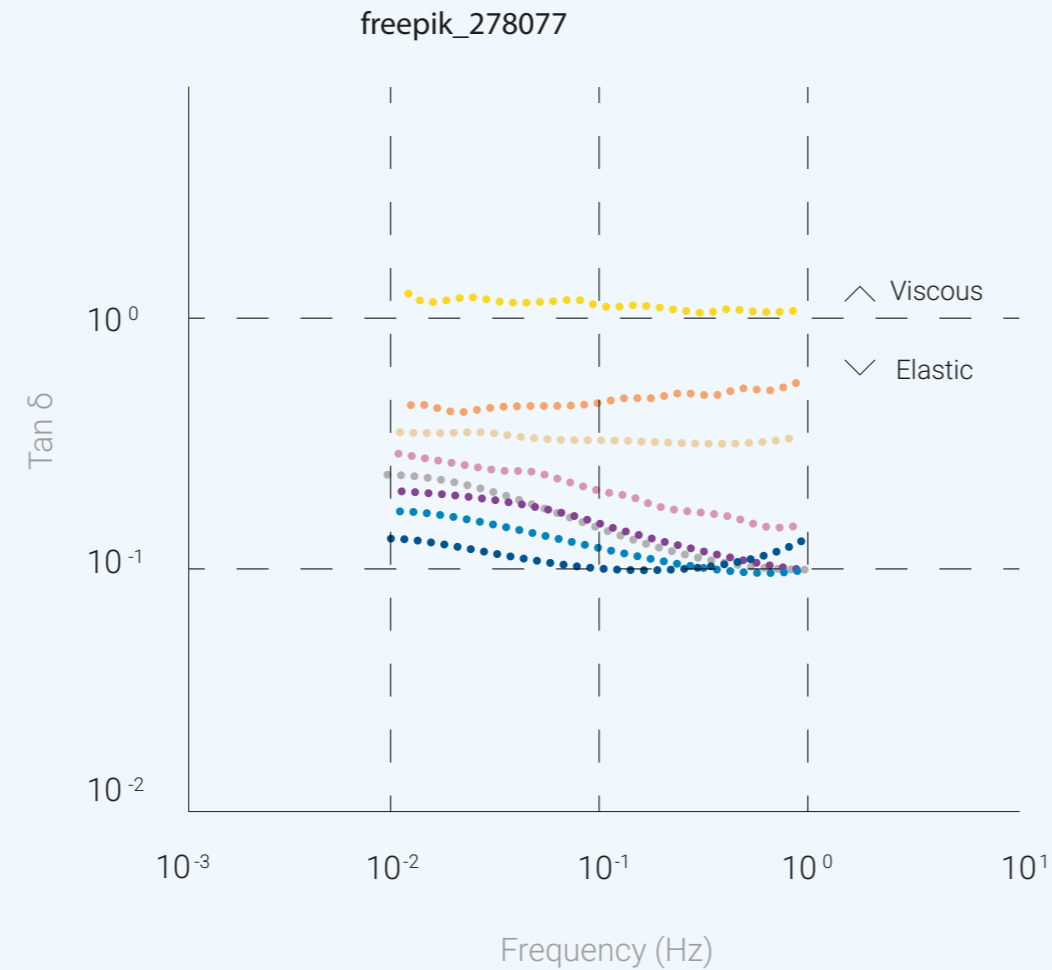
# AURA is a science-driven aesthetic and wellness brand developed under pharmaceutical standards and advanced biotechnology expertise.

Founded on clinical rigor and formulation precision, AURA designs high-performance solutions that combine safety, innovation, and natural-looking results. Every product is engineered with strict quality control, controlled manufacturing processes, and carefully selected biomaterials.



# Comparable Rheological Properties

- AURAFEEL +1
- AURAFEEL +2
- AURAFEEL +3
- AURAFEEL +4
- BELOTERO SOFT®
- BELOTERO BALANCE®
- JUVEDERM VOLUMA®
- TEOSYAL ULTRA DEEP®



## THE BEST RHEOLOGICAL RATIO

Due to innovative and distinctive technology, AURAFEEL™ fillers have the most optimal ratio of rheological properties. The wide range of AURAFEEL™ fillers suggests a holistic solution for each patient based on their skin's anatomic structures.



**ELASTICITY**  
For optimal tissue support



**COHESIVITY**  
For excellent tissue integration



**PLASTICITY**  
For excellent malleability

# AURA

Lorem ipsum dolor sit amet, consectetur adipiscing elit.

Lorem ipsum dolor sit amet, consectetur adipiscing elit, sed diam nonummy nibh euismod tincidunt ut laoreet dolore magna aliquam

Lorem ipsum dolor sit amet, consectetur adipiscing elit.



## AURA Feel +1

Lorem ipsum dolor sit amet, consectetur adipiscing elit, sed diam nonummy nibh euismod tincidunt ut

10 mg/ml  
 Lidocaine 0.3%  
 Volume 2x1 ml

Needle size: 30 G

Cross-linking level ○○○○

### Indications

Skin hydration of the face, neck, décolletage, back of hands.

### Key benefits

Deep hydration, improved skin texture, enhanced elasticity, subtle smoothing effect, natural radiance.

### Suited to

Hydration-focused formula with light structural support, ideal for skin quality improvement.



## AURA Feel +2

Lorem ipsum dolor sit amet, consectetur adipiscing elit, sed diam nonummy nibh euismod tincidunt ut

10 mg/ml  
 Lidocaine 0.3%  
 Volume 2x1 ml

Needle size: 30 G

Cross-linking level ●○○○

### Indications

Skin hydration of the face, neck, décolletage, back of hands.

### Key benefits

Deep hydration, improved skin texture, enhanced elasticity, subtle smoothing effect, natural radiance.

### Suited to

Hydration-focused formula with light structural support, ideal for skin quality improvement.



## AURA Feel +3

Lorem ipsum dolor sit amet, consectetur adipiscing elit, sed diam nonummy nibh euismod tincidunt ut

10 mg/ml  
 Lidocaine 0.3%  
 Volume 2x1 ml

Needle size: 30 G

Cross-linking level ●●○○

### Indications

Skin hydration of the face, neck, décolletage, back of hands.

### Key benefits

Deep hydration, improved skin texture, enhanced elasticity, subtle smoothing effect, natural radiance.

### Suited to

Hydration-focused formula with light structural support, ideal for skin quality improvement.



## AURA Feel +4

Lorem ipsum dolor sit amet, consectetur adipiscing elit, sed diam nonummy nibh euismod tincidunt ut

10 mg/ml  
 Lidocaine 0.3%  
 Volume 2x1 ml

Needle size: 30 G

Cross-linking level ●●●○

### Indications

Skin hydration of the face, neck, décolletage, back of hands.

### Key benefits

Deep hydration, improved skin texture, enhanced elasticity, subtle smoothing effect, natural radiance.

### Suited to

Hydration-focused formula with light structural support, ideal for skin quality improvement.



## AURA Feel +

Lorem ipsum dolor sit amet, consectetur adipiscing elit, sed diam nonummy nibh euismod tincidunt ut

10 mg/ml  
 Lidocaine 0.3%  
 Volume 2x1 ml

Needle size: 30 G

Cross-linking level ●●●●

### Indications

Skin hydration of the face, neck, décolletage, back of hands.

### Key benefits

Deep hydration, improved skin texture, enhanced elasticity, subtle smoothing effect, natural radiance.

### Suited to

Hydration-focused formula with light structural support, ideal for skin quality improvement.

# AURA FEEL +1

A scientifically formulated solution designed to deliver targeted aesthetic performance with optimal safety and natural integration.



- Indications:  
Skin hydration for:
- Face
  - Neck
  - Décolletage
  - Back of hands



Syringe: 2 x 1 ml  
Needle Size: 30 G



Concentration:  
10 mg/ml, Cross-linked HA  
Lidocaine: 0.3%

## Injections Technics

### Forehead lines

Serial puncture, linear threading and fanning

### Glabellar lines

Serial puncture, linear threading

### Crow's feet

Serial puncture, linear threading

### Vermilion border

Linear threading

### Vertical lip lines

Linear threading, serial puncture



BEFORE



AFTER



Before

After

AURA Aesthetics - FEEL

AURA Aesthetics - FEEL

AURA

# AURA FEEL +2

A scientifically formulated solution designed to deliver targeted aesthetic performance with optimal safety and natural integration.



- Indications:  
Skin hydration for:
- Face
  - Neck
  - Décolletage
  - Back of hands



Syringe: 2 x 1 ml  
Needle Size: 30 G



Concentration:  
10 mg/ml, Cross-linked HA  
Lidocaine: 0.3%

## Injections Technics

### Forehead lines

Serial puncture, linear threading and fanning

### Glabellar lines

Serial puncture, linear threading

### Crow's feet

Serial puncture, linear threading

### Vermilion border

Linear threading

### Vertical lip lines

Linear threading, serial puncture



BEFORE



AFTER



# AURA FEEL +3

A scientifically formulated solution designed to deliver targeted aesthetic performance with optimal safety and natural integration.



Indications:  
Skin hydration for:

- Face
- Neck
- Décolletage
- Back of hands



Syringe: 2 x 1 ml  
Needle Size: 30 G



Concentration:  
10 mg/ml, Cross-linked HA  
Lidocaine: 0.3%

## Injections Technics

### Forehead lines

Serial puncture, linear threading and fanning

### Glabellar lines

Serial puncture, linear threading

### Crow's feet

Serial puncture, linear threading

### Vermilion border

Linear threading

### Vertical lip lines

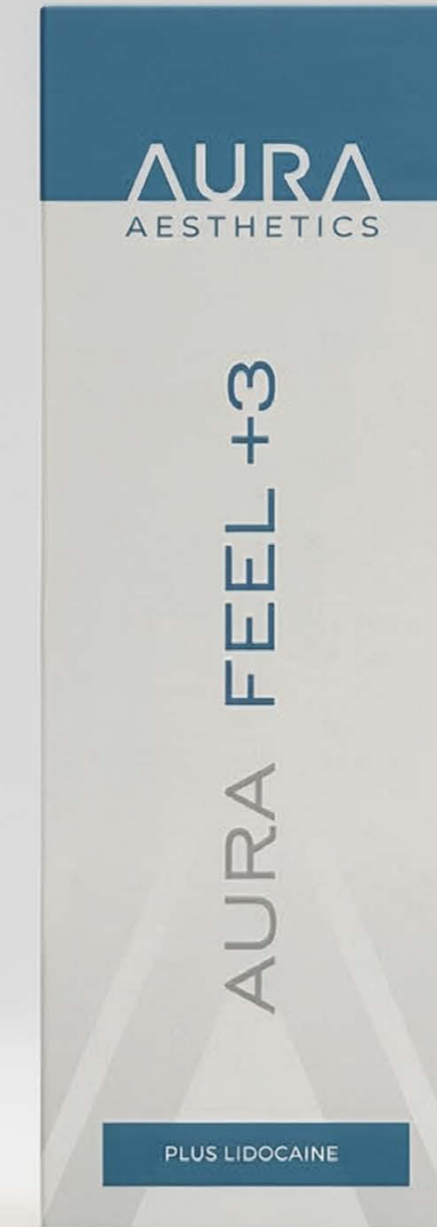
Linear threading, serial puncture



BEFORE



AFTER



# AURA FEEL +4

A scientifically formulated solution designed to deliver targeted aesthetic performance with optimal safety and natural integration.



Indications:  
Skin hydration for:

- Face
- Neck
- Décolletage
- Back of hands



Syringe: 2 x 1 ml  
Needle Size: 30 G



Concentration:  
10 mg/ml, Cross-linked HA  
Lidocaine: 0.3%

## Injections Technics

### Forehead lines

Serial puncture, linear threading and fanning

### Glabellar lines

Serial puncture, linear threading

### Crow's feet

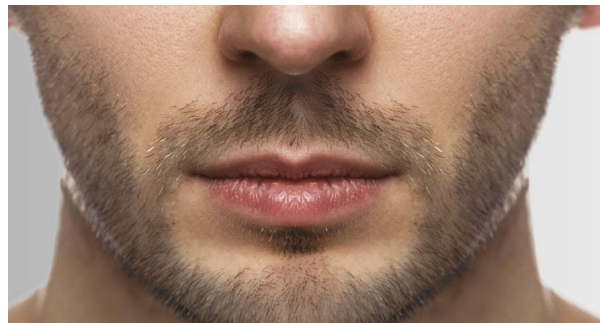
Serial puncture, linear threading

### Vermilion border

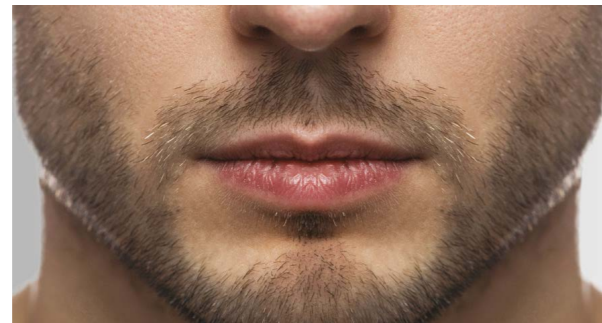
Linear threading

### Vertical lip lines

Linear threading, serial puncture



BEFORE



AFTER



# AURA FEEL +

A scientifically formulated solution designed to deliver targeted aesthetic performance with optimal safety and natural integration.



- Indications:  
Skin hydration for:
- Face
  - Neck
  - Décolletage
  - Back of hands



Syringe: 2 x 1 ml  
Needle Size: 30 G



Concentration:  
10 mg/ml, Cross-linked HA  
Lidocaine: 0.3%

## Injections Technics

### Forehead lines

Serial puncture, linear threading and fanning

### Glabellar lines

Serial puncture, linear threading

### Crow's feet

Serial puncture, linear threading

### Vermilion border

Linear threading

### Vertical lip lines

Linear threading, serial puncture



BEFORE



AFTER

